



SOLAR RENEWABLE ENERGY, LLC

Qualifications, Experience & Representative Projects



Solar Renewable Energy LLC

Overview

Solar Renewable Energy, LLC

- Qualifications & Experience 3
- Our Business At-A-Glance 4
- Select Listing of Current / Completed Projects 5
- Representative Projects 6
- Operations & Management 18
- Contact Information 20



Solar Renewable Energy, LLC

Qualifications & Experience

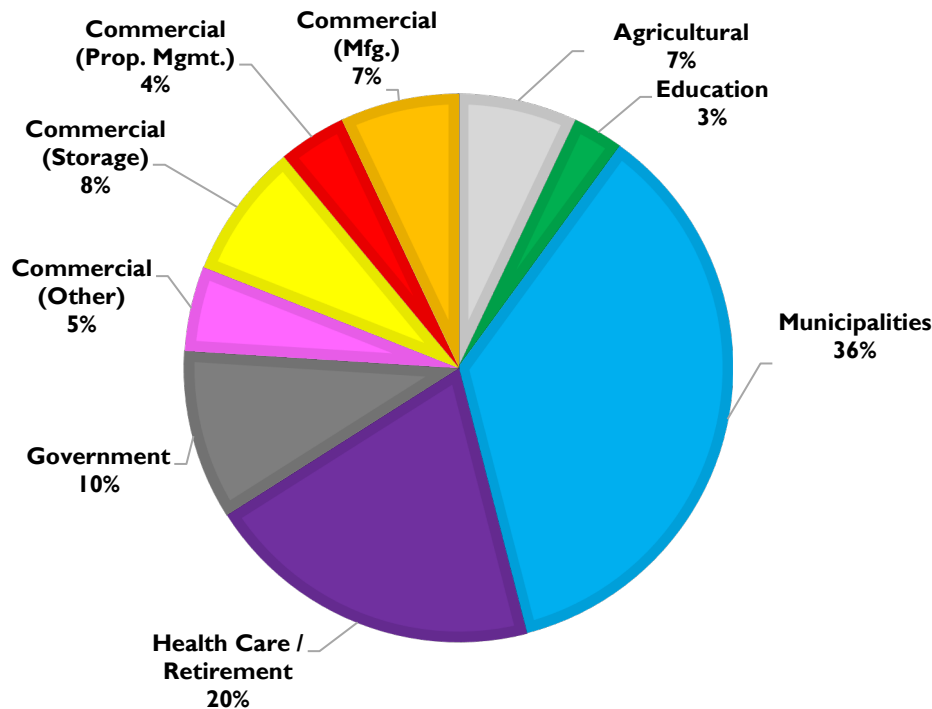
- ▶ Solar Renewable Energy LLC's customer base includes:
 - ▶ Tax Credit and Private Equity Investors
 - ▶ Creditworthy Corporations and Commercial Entities
 - ▶ Municipalities, Townships and other Governmental Authorities (including Public Utilities)
 - ▶ For-profit and Non-profit Retirement Communities, Health Providers and Systems and Educational Institutions
- ▶ SRE has designed, developed, financed and operates 100+ solar energy systems in the Mid-Atlantic and Northeast regions of the US:
 - ▶ Asset value: > \$200 Million
 - ▶ **Annual** electricity production: Over 50 MWhs
- ▶ SRE has partnered with lenders and others to provide project financing to credit qualified customers under various structures including:
 - ▶ Power Service Agreement (PSA)
 - ▶ Power Purchase Agreement (PPA)
 - ▶ Private and Tax Equity Financing (various structures)
 - ▶ Third Party Development
- ▶ SRE is highly active in the Solar Renewable Energy Credit (SREC) futures exchange markets:
 - ▶ SRE is a registered PJM Aggregator / Broker that sells SRECs for over 50 MWhs of solar output to public utilities in PA, NJ, MD, OH, CT and the District of Columbia through registered projects and publically bid / awarded supply contracts
 - ▶ SRE awarded several 8 and 10-year contracts with Public Utility Companies to supply SRECs **annually**
- ▶ SRE is an investor in many solar projects that it has developed
- ▶ SRE is actively involved in the Solar Energy Industries Association ("SEIA") and various state associations



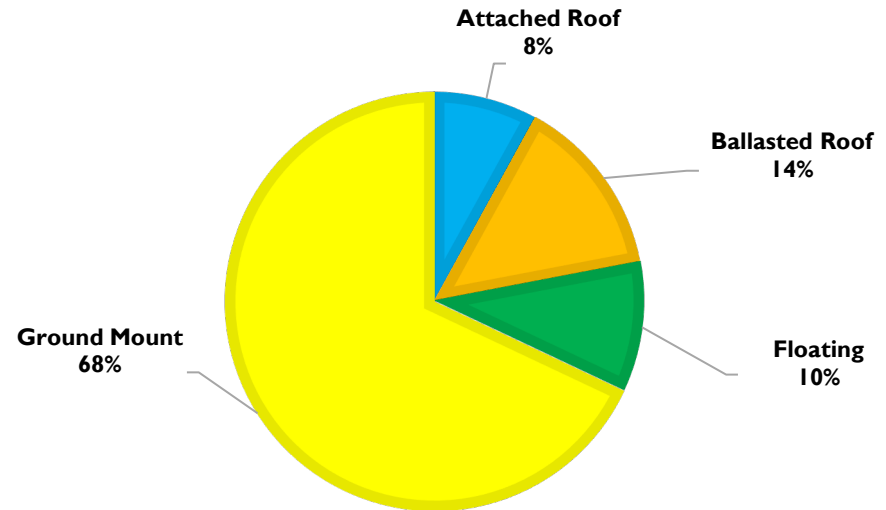
Solar Renewable Energy, LLC

Our Business At-A-Glance

SRE Solar Systems: Project Type



SRE Solar Systems: Array Type



- 100+ projects
- > 50 MWhs total output annually
- Projects located in the Mid-Atlantic and Northeast



Solar Renewable Energy, LLC

Select Listing of Current/Completed Projects:

▶ Pennsylvania:

- ▶ University Area Joint Authority
- ▶ Centre County
- ▶ Susquehanna Township
- ▶ Midd-West School District
- ▶ Pottsville Area School District
- ▶ Tamaqua Area School District
- ▶ Commonwealth Charter Academy
- ▶ Quarryville Presbyterian Retirement Community
- ▶ York County Solid Waste Authority
- ▶ Mount Joy Borough Authority
- ▶ Penn Township
- ▶ 7th Street Rooftop Properties
- ▶ Fulling Mill Road Solar Properties
- ▶ The Storing Crew
- ▶ Lower Allen Business Center
- ▶ Adams County Electric Cooperative
- ▶ Black River Farms
- ▶ 4550 Lena Drive
- ▶ 4530 Lena Drive
- ▶ Arthur Funk & Sons

▶ New Jersey:

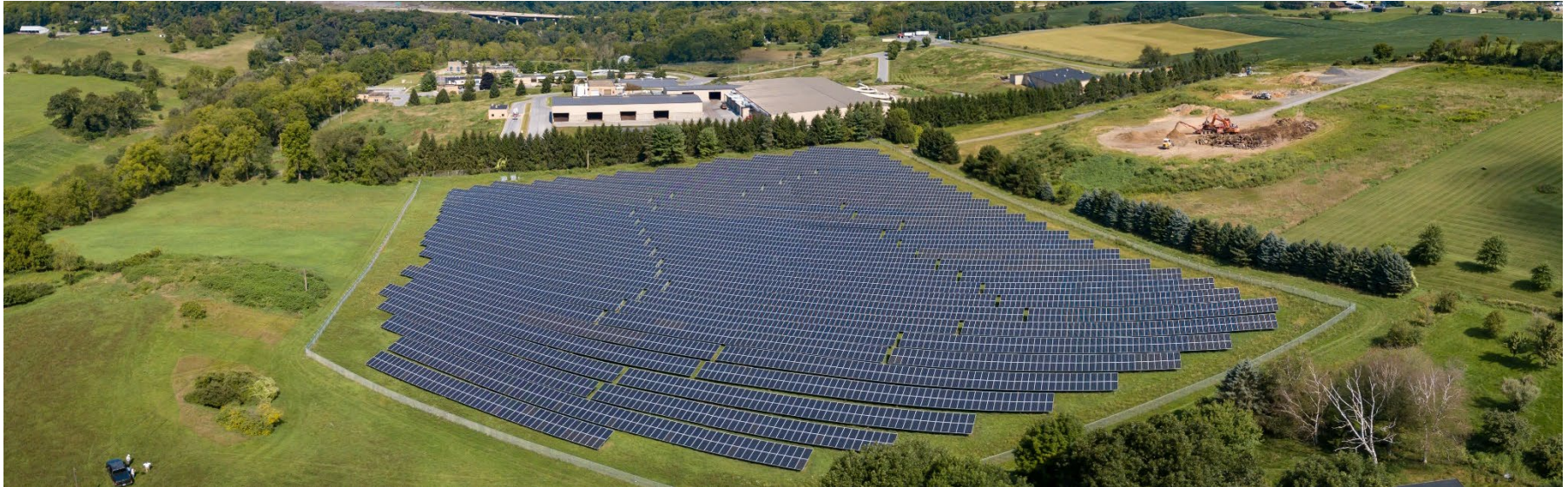
- ▶ Borough of Sayreville
- ▶ Midland School
- ▶ Allendale Nursing Home, Inc.
- ▶ Bestwork Industries for the Blind, Inc.
- ▶ Ocean County Baptist Church
- ▶ The Gardens at Cross Keys

▶ Other areas in the northeast:

- ▶ Plainville, CT Board of Education (Linden, Connecticut)
- ▶ Green Mountain Power (Chester, VT)



Representative Projects: Municipal Ground Arrays



University Area Joint Authority – State College, PA

- 2.61 MW Solar Energy System located in State College, PA
- Offsets power use for wastewater treatment plant
- Power Service Agreement (PPA) structure for 30 years



Representative Projects: Educational – Ballasted Roof Arrays



Commonwealth Charter Academy (“CCA”)

- Second largest charter school in PA with over 9,000 students
- 388.8kW ballasted rooftop array system located in Harrisburg, PA
- Powers Aquaponics program and generates 1/3 of CCA’s annual electric requirements



Representative Projects: Educational – Ground Mount Arrays



Midd-West School District

- Midd-West Middle School, Middleburg, PA
- 5,130 400-410W bifacial solar panels
- 2,103kW ground mount array
- Offsets nearly all of electric usage of the school



Representative Projects: Correctional Facility Ground Arrays



Centre County Correctional Facility (“CCCCF”)

- 1,196kW Solar Energy System located in Bellefonte, PA
- Largest solar array at correctional facility in PA
- Power Service Agreement (PPA) structure for 30 years

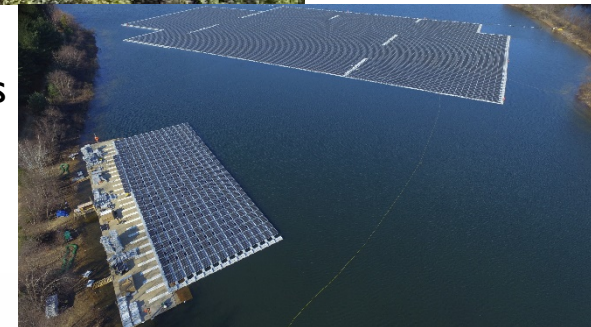


Representative Projects: Floating Solar Arrays



Borough of Sayreville, NJ

- Largest floating solar array installation in the United States as of August 26, 2020
- 4,410kW floating solar array system located in Sayreville, NJ
- Ninth (9th) largest floating solar array in the world at interconnection time.



Representative Projects: Retirement Community Ground Arrays



Quarryville Presbyterian Retirement Community:

- 450kW solar energy system located in Quarryville, PA
- Qualified for “virtual net metering” under PPL
- Project owned by Quarryville Power Partners, LLC
- \$575,000 grant recipient under Pennsylvania CFA program
- 20-year Power Purchase Agreement structure



Representative Projects: Healthcare Attached Roof Array



The Gardens at Cross Keys:

- 187kW net metered system located in Glassboro, NJ
- Solar Renewable Energy procured a 15-year SREC under the NJ SREC based financing program
- Project is owned by VIBRA Health System
- Solar Renewable Energy provides ongoing monitoring and operations management services to project under long-term monitoring agreement



Representative Projects: Municipal Ballasted Roof Arrays



Susquehanna Township

- 324 kW Solar Energy Systems located in Susquehanna Township
- Offsets power use for administrative government, police, fire and highway maintenance buildings
- Bifacial solar modules provide incremental dual side energy generation
- Offsets 70% of electric usage
- Power Service Agreement (PSA) structure



Representative Projects: Municipal Ground Arrays



Mount Joy Borough Authority:

- 385kW Solar Energy System located in Mount Joy, PA
- Offsets power use for sewer and wastewater treatment plant
- Project owned by Mount Joy Solar Power, LLC
- \$485,000 grant recipient from the Pennsylvania CFA Program
- Mount Joy Borough Authority carries an S&P “A” issuer rating
- 25 year Power Service Agreement (PSA) structure



Representative Projects: Distributed Generation Ground Arrays



Chester Solar Farm:

- 2.4MW solar energy system located in Chester, VT
- Generation contracted to Green Mountain Power Corporation, a Baa2 rated, VT public utility under 25-year FIT (Feed In Tariff) program
- Solar Renewable Energy, LLC completed a complicated and lengthy VT Public Service Board Section 248 Application process
- Financed utilizing investment tax credits, debt and private equity



Representative Projects: Commercial Mounted and Ballasted Arrays



SRE's Corporate Office Building
4550 Lena Drive, Mechanicsburg, PA



4530 Lena Drive, Mechanicsburg, PA



Representative Projects: Commercial Mounted and Ballasted Arrays



Westport Business Center, Mechanicsburg, PA



Operations & Management



The screenshot shows the PJM EIS GATS Login page. At the top, there is a header with the PJM EIS logo, contact information (Call Us 877.750.GATS (4287)), and links for Latest News, Contact Us, and Subscribe. Below the header is a navigation bar with links: Getting Started, Events & Training, Program Information, Reports & News, and Documents. The main content area features a large image of wind turbines and a GATS Login form with fields for Login Name, Password, and a checkbox for Remember My Login Name. There are also links for Forgot your password?, Trouble logging in?, and Not a Member? Register Here. Below the login form, there is a section titled 'PJM EIS' largest focus is to provide the reporting and tracking services of both emissions data and Renewable Energy Credits (RECs) also known as, renewable energy certificates. Services are administered by PJM EIS through the Generation Attribute Tracking System (GATS), which is owned and operated by PJM EIS. Another section describes how GATS tracks the generator's electric output for the issuance of the applicable RECs. A sidebar on the right contains a 'fletexchange' logo and text about immediate payment for SRECs, transparent and actionable SREC bids, long-term contracts for commercial clients, and increasing the earning potential of solar investment, supported by a team of seasoned professionals. At the bottom, there is a section for 'Upcoming Events & Training'.

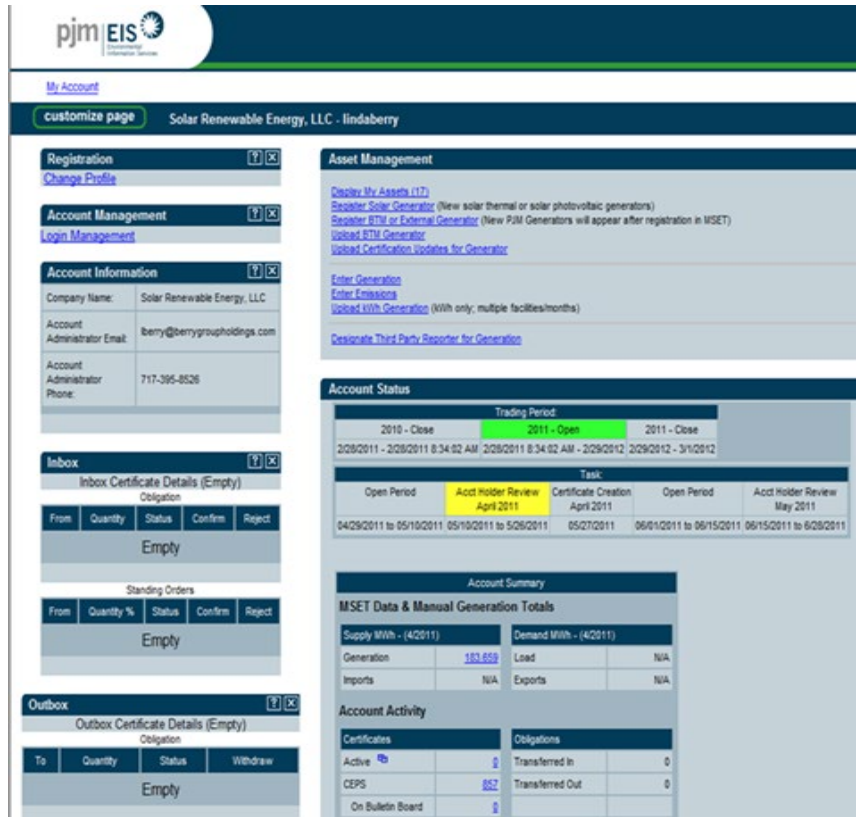
PJM EIS' largest focus is to provide the reporting and tracking services of both emissions data and Renewable Energy Credits (RECs) also known as, renewable energy certificates. Services are administered by PJM EIS through the Generation Attribute Tracking System (GATS), which is owned and operated by PJM EIS.

For generation owners—both large merchant generation owners, and small business or residential generation owners—the GATS tracks the generator's electric output for the issuance of the applicable RECs. The GATS also tracks the ownership of those RECs through their use by an electric utility for state Renewable Portfolio Standard (RPS) compliance.

Simply put:

- To generation owners: GATS helps turn generation output into a commodity;
- To both the electric utilities and owners of certain generators that produce emissions: GATS helps meet government environmental requirements associated with electric operations, such as RPS compliance and emissions disclosure.

Upcoming Events & Training



The screenshot shows the PJM EIS account page for Solar Renewable Energy, LLC - lindaberry. The page has a header with the PJM EIS logo and a navigation bar with links: My Account, customize page, and Solar Renewable Energy, LLC - lindaberry. The main content area is divided into several sections: Registration (Change Profile), Account Management (Login Management), Account Information (Company Name: Solar Renewable Energy, LLC, Account Administrator Email: lberry@berrygroup Holdings.com, Account Administrator Phone: 717-395-8526), Asset Management (Display My Assets (17), Register Solar Generator, Register RTM or External Generator, Upload RTM Generator, Upload Certification Updates for Generator, Enter Generation, Enter Emissions, Upload With Generation, Designate Third Party Reporter for Generation), Account Status (Trading Period: 2010 - Close, 2011 - Open, 2011 - Close; Task: Open Period, Acct Holder Review, Certificate Creation, Open Period, Acct Holder Review), Account Summary (MSET Data & Manual Generation Totals, Supply MWh, Demand MWh, Generation, Load, Imports, Exports, N/A), and Account Activity (Certificates, Active, CEPS, On Bulletin Board, Transferred In, Transferred Out, 0, 0).

Registration
[Change Profile](#)

Account Management
[Login Management](#)

Account Information
Company Name: Solar Renewable Energy, LLC
Account Administrator Email: lberry@berrygroup Holdings.com
Account Administrator Phone: 717-395-8526

Asset Management
[Display My Assets \(17\)](#)
[Register Solar Generator](#) (New solar thermal or solar photovoltaic generators)
[Register RTM or External Generator](#) (New PJM Generators will appear after registration in MSET)
[Upload RTM Generator](#)
[Upload Certification Updates for Generator](#)
[Enter Generation](#)
[Enter Emissions](#)
[Upload With Generation](#) (With only: multiple facilities/months)
[Designate Third Party Reporter for Generation](#)

Account Status
Trading Period: 2010 - Close, 2011 - Open, 2011 - Close
2/28/2011 - 2/28/2011 8:34:02 AM, 2/28/2011 8:34:02 AM - 2/29/2012, 2/29/2012 - 3/1/2012
Task: Open Period, Acct Holder Review, Certificate Creation, Open Period, Acct Holder Review
04/29/2011 to 05/10/2011, 05/10/2011 to 5/26/2011, 05/27/2011, 06/01/2011 to 06/15/2011, 06/15/2011 to 6/28/2011

Account Summary
MSET Data & Manual Generation Totals
Supply MWh - (4/2011): 183,659
Demand MWh - (4/2011): N/A
Generation: 183,659
Load: N/A
Imports: N/A
Exports: N/A

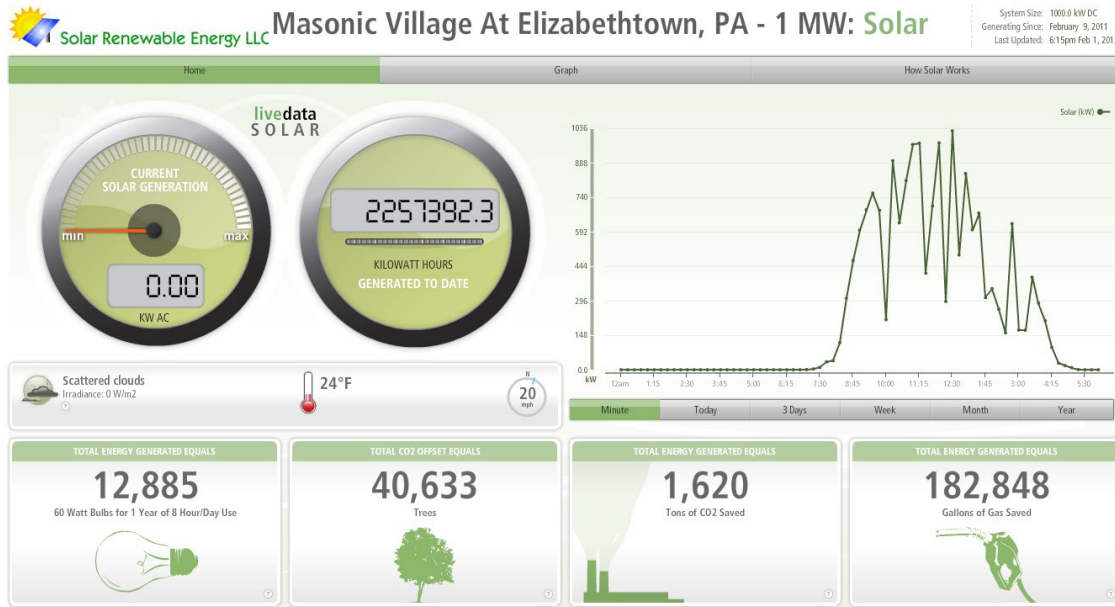
Account Activity
Certificates
Active: 0
CEPS: 652
On Bulletin Board: 0
Obligations
Transferred In: 0
Transferred Out: 0

Solar Renewable Energy, LLC:

- Is a registered PJM / EIS aggregator in PA, NJ, DE, MD, OH, and WASH D.C.
- Sells over 35MWhs of SRECs to utilities annually.



Operations & Management



Key “Dashboard” Indicators:

- Electricity generated
- CO2 offset / saved
- Gallons of gas saved

- Solar energy systems monitored every 15 minutes for solar electricity output



Contact Information:

- **Douglas R. Berry**
 - CEO and President, Solar Renewable Energy, LLC
 - 717.571.1151
 - DBerry@SREnergyLLC.com
- **Steven R. Crimmel**
 - Sales Director, Solar Renewable Energy, LLC
 - 717.329.5777
 - SCrimmel@SREnergyLLC.com
- **Seth R. Berry**
 - Manager, Solar Renewable Energy, LLC
 - 717.439.5341
 - SBerry@SREnergyLLC.com
- **David J. Faust**
 - Project Developer, Solar Renewable Energy, LLC
 - 570.573.5365
 - DFaust@SREnergyLLC.com

